

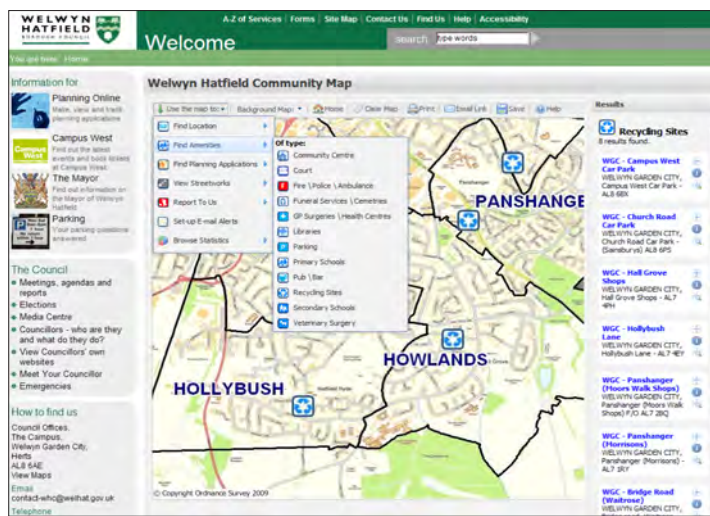
Community Map

Customizable Map Information Pages for Local Authority Web Sites

Map based web pages give Local Authorities the ideal platform for sharing information with, and gaining feedback from, the community they serve. Community Map from Innogistic has been developed to make on-line information access and incident reporting a simple, trouble-free experience.

What is Community Map?

Community Map is a set of pre-configured, yet highly customisable web mapping pages and tools, which provide powerful community information access and feedback functionality, through an easy to use web interface. The different modules within Community Map have been specifically developed to provide an uncomplicated solution for the provision of interactive map based information portals, a powerful tool for reducing avoidable contacts and achieving NI14 targets.



Customizable Menus

What Makes Community Map different?

Community Map is made up of a number of separate modules, each delivering different search, report, alert and browse functionality and developed to make access to community information as simple and easy as possible. The powerful tools allow the visitor to find on-line answers to a wide range of enquiries with the minimum of interaction or need for experience in web map tools.

Community Map is highly flexible and can be configured for intranet/extranet services as well as public access internet sites. This gives web managers flexibility in the creation of their intranet and internet pages without the need to develop custom built web-map portals which can very quickly become obsolete as technology advances.

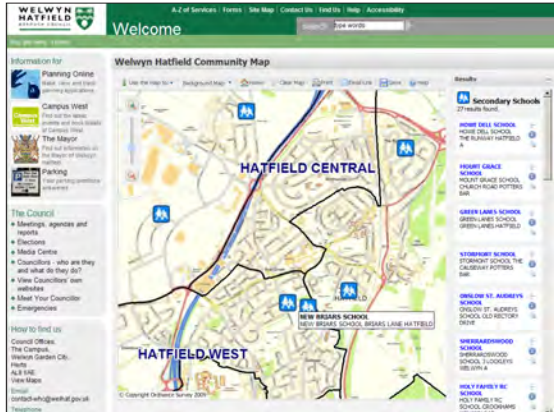
Key Benefits

- Reduces avoidable contact by providing powerful yet simple to use public access information pages, giving significant 'quick wins' against NI14 targets
- Seamless integration with existing web content and pages (internet / intranet / extranet)
- Customisable to corporate website design and branding
- Rich interactive user experience utilising the latest web technologies
- Modular format allows choice of functionality levels in web site design which can be added to and developed over time.
- Saves cost by utilizing the Authority's existing GIS infrastructure and data stores
- Delivers cost conscious implementation of advanced map based citizen information portals



Community Map

Modules



Find Nearest Schools

COMMUNITY MAP: Find it Neighbourhood Search Module

Use any geospatial data or links to create customized searches such as:

- Search on Address, Town / Area, Postcode, Ward
- Find closest amenities to location or within an area
- Search for planning applications within a definable area or on specific criteria (e.g. find all new retail planning applications)
- Search street works by type, location and if on-going or proposed.

COMMUNITY MAP: Report it Observation Reporting Module

Allows Citizens to report items of concern to their Local Authority such as:

- fly-tipping,
- abandoned vehicles,
- graffiti,
- pot-holes,
- broken street lights

Module include's a customizable feed-back form for details of problem, date of report etc with a click on location tool to give map grid reference of problem or tools to define specific areas of concern.

COMMUNITY MAP: Alert E-mail Alert Module

Citizens can set up E-mail alerts on given parameters such as:

- Notifications on new planning applications within a given area, street etc
- Notifications of future street works
- Notifications of forthcoming street closures
- Notifications of forthcoming events

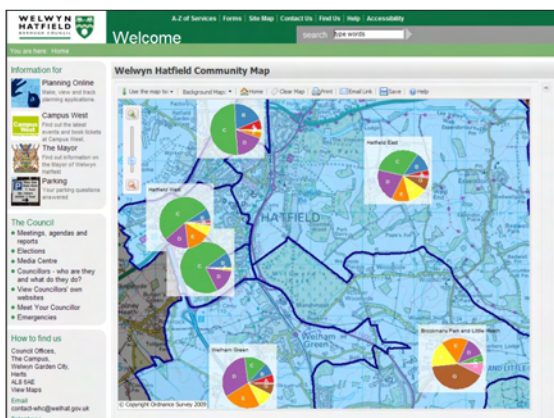
COMMUNITY MAP: Discover Local Information and Statistics Module

Browse information or statistics in a defined local area such as:

- Information on Council Tax bands, population density, crime, health, house prices etc.
- Locality information with hyperlinks, such as local political profile and links to local councillor's web site.
- Link into any local residents surveys, forms and results.



Report Incidents



Local Statistics Pie Charts

