

# FastGCIS™

## Comprehensive Contaminated Land Management Solution

FastGCIS is part of our range of Land & Property Systems. It is designed for use by Local Government Officers for the management of their data relating to Contaminated Land and the administrative processes behind this. It records information on the site, the geology, the hydrology, site surveys, remediation contacts, remediation actions, linkages of Receptors and Pathways, site sign-off details and manages the GIS links. It is not a modelling system however.

### What is FastGCIS™?

FastGCIS is a Ground Contamination Information System designed for the efficient maintenance of data related to contaminated land, and the processes required to manage that land. It records information on the site, the geology, the hydrology, site surveys, remediation contacts, remediation actions, linkages of Receptors and Pathways, site sign-off details and manages the GIS links.



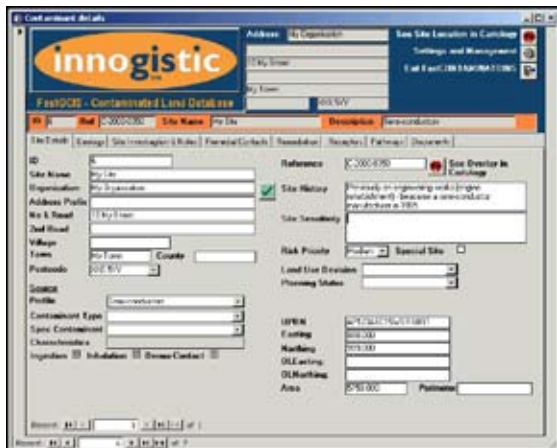
### What makes FastGCIS™ different?

The links provided between FastGCIS and Cartology GIS allow the user easy switching between the GIS and the database in either direction using unique 'fly over data tips' as well as full spatial analysis for constraint checking and recording of site boundaries, receptors and pathways. FastGCIS can be linked with any GIS that is ODBC compatible.

### Key Benefits

- Recording full site details including contaminant types, main contaminants, site history etc
- The geology and hydrology of the site
- Recording of site survey information on boreholes & trial pits and the sampling data
- Remedial contact details
- Remediation details including status and notices
- Details on sites designated as 'Special Sites'
- Receptors and Pathways
- Full document management associated with site
- Full links to embedded GIS for spatial capture and analysis.





Tabbed screens for easy data access and full links

### Remediation

Remedial Actions allow the recording of all steps taken to deal with the contaminated site. This includes 'actions due' and 'actioned dates', whether voluntary or urgent action is required, notice details and whether a statement has been produced.

### Document Management

Keep track of all those letters, digital photographs, video clips, reports etc, and load them with a single click.

### Site Investigation Reports

Detail the trial pit and borehole logs for the site together with any sampling carried out. Highlight substances exceeding the recommended threshold. Link the trial pit and borehole locations to the GIS.

### Contaminant Type to Contaminants Relationship Tables

Easy to use management screens allow complete system configuration and mapping of types to contaminants and sectors as well as Cartology GIS overlay setups etc.

### Remedial Contacts

Keep track of the contact details for all the contaminated sites in your authority together with the time frame of involvement.

### Geology & Hydrology

Record details of the drift and solid geology together with the related hydrology. Record the vulnerability class of the aquifers, groundwater depths, direction of flow, if it is a groundwater protection zone and surface water details.

### Management Setup

FastGCIS management screens allow the setup of auto address lookup tables and all the default types for geology, contaminants etc.

