

Cartology DSI™

Discover the geography in your business

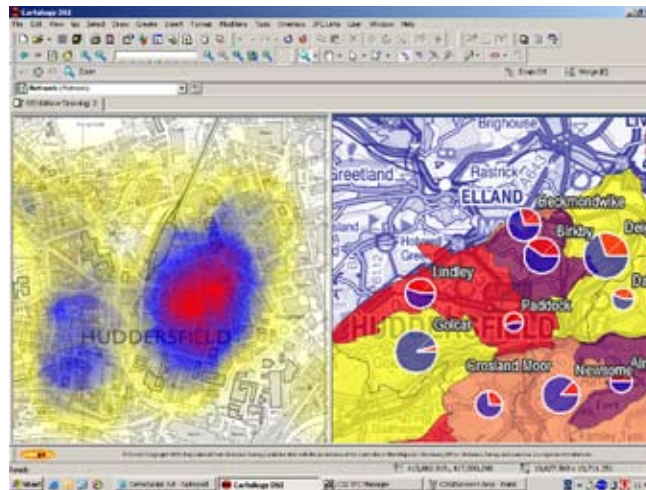
Everything happens somewhere. Few IT systems portray where.

The result – strategic decisions, crucial to the efficiency of your operations are being made without a clear picture of the geography inherent in your business. Visualising and analysing the geographic patterns locked in your existing IT systems, has now got even easier with the latest desktop GIS technology from Innogistic.

What is Cartology DSI™?

Cartology DSI is a Desktop Geographic Information System (GIS), ideally suited to visualising and analysing the geographic patterns in your business data.

Combining ease of use with rich functionality, Cartology DSI provides sophisticated tools for data access, visualisation, map production, reporting, spatial analysis and data capture to name a few.



Data visualisation and analysis in Cartology DSI

What makes Cartology DSI™ different?

Imagine buying a word processor – only to find that to print or edit your documents, you need to purchase extra ‘modules’. Crazy though this may sound, this is precisely how many GIS suppliers package their products.

Cartology DSI is different. One application. One price. No hidden costs.

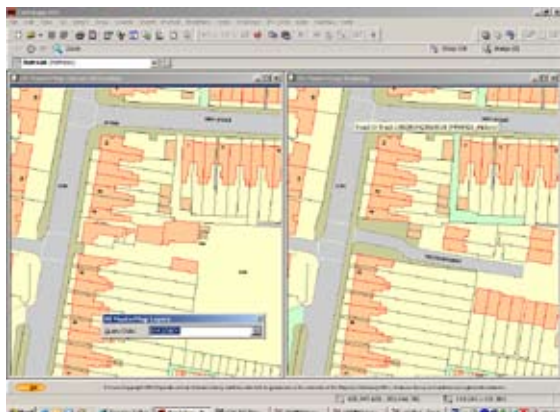
Key Benefits

- Discover critical geographic patterns in your data
- Integrate information from multiple IT systems
- Visualise complex patterns quickly and easily
- Capture additional data accurately and consistently
- Produce eye catching maps and plans
- Get up and running quickly and easily

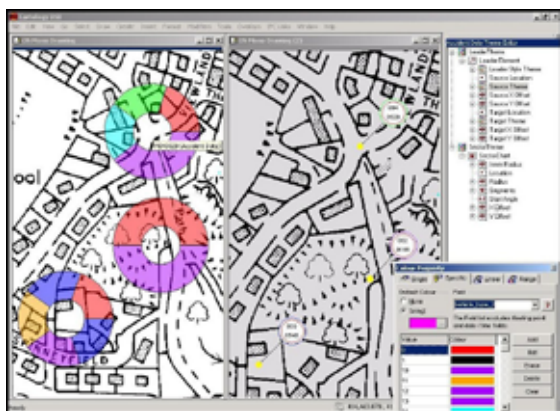


Cartology DSI™

Key Features



Historic views of OS MasterMap® data



Visualising accident data



Plot output, combining aerial photographs and OS MasterMap® building polygons

Data Access

- Native support for all common GIS formats (shp, tab, mif/mid etc.)
- Native support for all common CAD formats (dxf, dwg, dgn, etc.)
- Native support for all common databases (SQL server, Oracle etc.)
- Open GIS support (GML, WKB, WMS)
- All common raster formats

OS MasterMap Support

- Nationwide coverage in 62 GB (topographic layer)
- Simple change only update management
- Support for historical views
- OS style guide
- Flexible representation

Visualisation & Analysis

- Multi-variate theming (the 'infinity' theme engine)
- Hot spot mapping
- Choropleth mapping
- Statistical mapping
- Raster (coverage) analysis

Data Capture

- Unrivalled data capture options
- CAD functions
- Trace offset
- Auto-make polygons

Integration

- Direct linking to other applications
- Active X component for embedded GIS
- Customisation macros
- Output to MS Excel

Gazetteer

- Gazetteer searching on any spatial dataset

Plot Production

- Sophisticated plot production tools
- User definable layout templates

Licensing

- No extra cost modules
- Concurrent licensing
- Competitive pricing

