

FastGAZETTEER™

BS7666:2006 Gazetteer Maintenance Software

A gazetteer management system should allow a local authority to maintain its properties and streets and fulfil its obligations to send regular and automated updates.

FastGAZETTEER from Innogistic allows gazetteer custodians to do just that. Operation of the system is simple, intuitive and user friendly, whilst enforcing the rules of the British Standard.

What is FastGAZETTEER?

FastGAZETTEER is a comprehensive and fully accredited BS7666:2006 gazetteer maintenance tool. It is designed for the creation and maintenance of Local Land and Property Gazetteers with automated transfer to NLPG and NSG hubs. The system includes seamless integration with GIS functionality and support for multiple spatial data formats.



Key Features:

- Full BS7666:2006 accreditation; Parts 0, 1, 2 and Levels 1, 2, 3 are supported
- Support for National Address Gazetteer and candidate address process
- Wizard driven routines and Tree View Driven Interface
- Seamless GIS integration
- Comprehensive validation rules
- Automated extract to NSG and NLPG hubs

Key Benefits:

- Data integrity for peace of mind, within one central solution improving working efficiencies to save money
- Your system is maintained in line with British Standards and best practice, no hidden costs
- Intuitive, easy to use interface reducing training costs
- Saving money on new products
- Peace of mind that data quality is maintained
- Saving time uploading data, schedule it and forget it



Enabled by



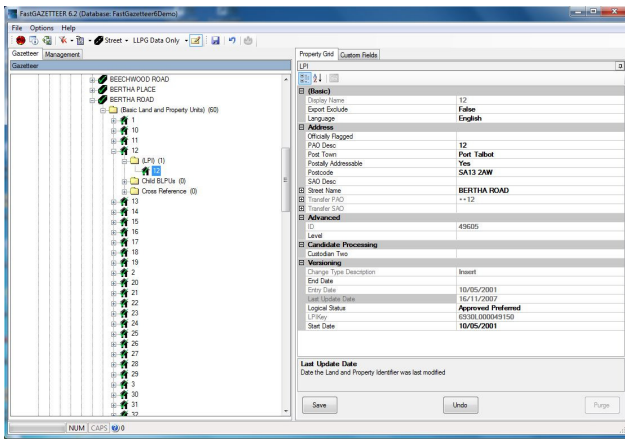
ISV Data Platform

Supplier to Government Procurement Service

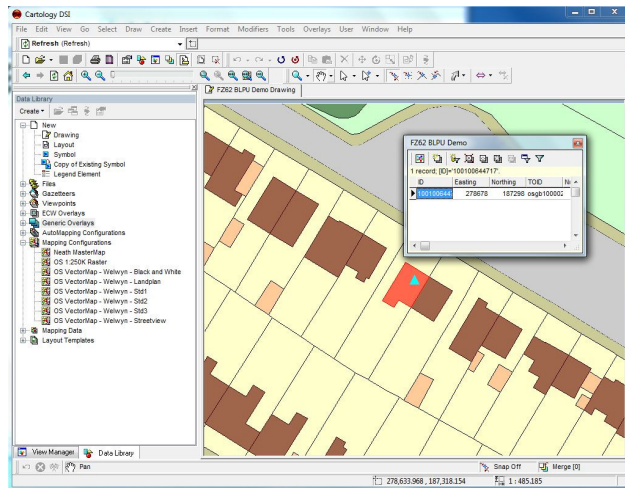


FastGAZETTEER™

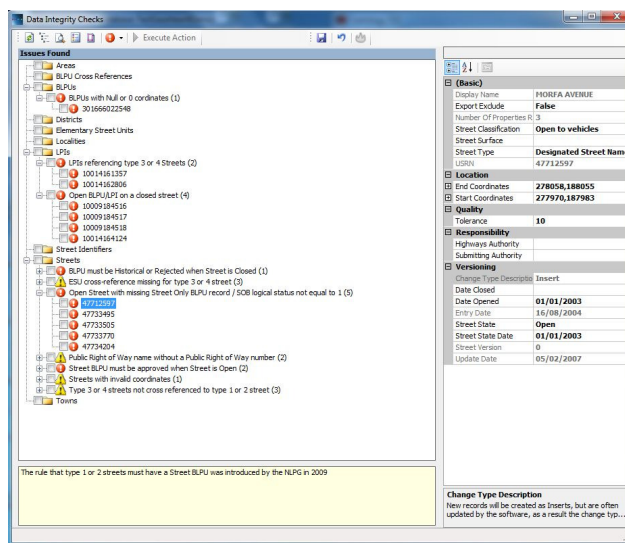
Key Features



FastGAZETTEER Tree View



FastGAZETTEER GIS Integration



FastGAZETTEER Data Integrity Checker

Parts and Levels

- Support for Part 0 (Metadata), Part 1 (Streets) and Part 2 (Land and Property) gazetteers
- Support for Part 1 additional street data (special reinstatement and special designation)
- Support for all levels of spatial data, from Level 1 (end points), Level 2 (elementary street units) to Level 3 (full geometry)
- Support for National Address Gazetteer data formats
- Multiple language support (Welsh and English), with language 'hot switch'

Extracts

- Automated update of NLPG and NSG hubs
- Scheduled extracts (from master gazetteers) - full and change only
- Scheduled loads (for slave gazetteers)
- DTF 6.3, 7.3.3.1, 6.1 (NSG data) exports
- Additional Street data, Street Reinstatement data, Street Special Designation Data

User Interface

- Hierarchical user interface for ease of data maintenance
- Wizard based application for common tasks – reducing the dependency on operator knowledge of the standard

Data Loading

- DTF 7.3.3.1 and DTF 6.1 (NSG) imports
- National Address Gazetteer import
- Additional Street data, Street Reinstatement data, Street Special Designation Data

Data Integrity

- Rigorous rule based quality checking and auditing tools
- Validation rules – logical status, BLPU states etc.

Database Features

- Industry standard database (SQL Server) for ease of corporate integration

GIS Features

- Seamless integration with GIS for querying and plotting street geometries
- GIS data format independent
- Optimised for use with Ordnance Survey MasterMap data

