

FastGAZETTEER™

BS7666:2006 Gazetteer Maintenance Software

A gazetteer management system should allow a local authority to maintain its properties and streets and fulfil its obligations to send regular and automated updates.

FastGAZETTEER from Innogistic Software allows gazetteer custodians to do just that. Operation of the system is simple, intuitive and user friendly, whilst enforcing the rules of the British Standard.

What is FastGAZETTEER™?

FastGAZETTEER is a comprehensive and fully accredited BS7666:2006 gazetteer maintenance tool. It is designed for the creation and maintenance of Local Land and Property Gazetteers with automated transfer to NLPG and NSG hubs. The system includes seamless integration with GIS functionality and support for multiple spatial data formats.



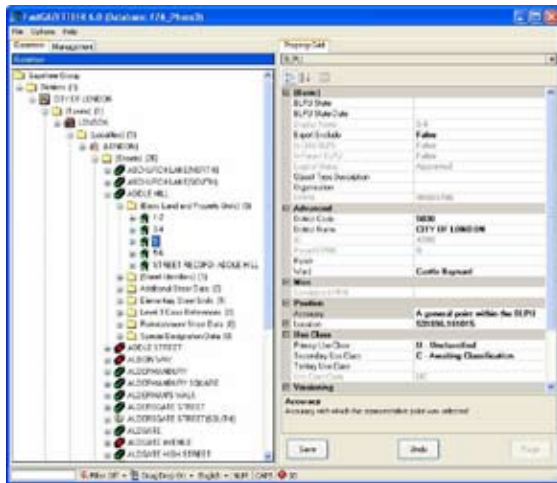
Key Benefits

- Full BS7666:2006 accreditation
- Parts 0, 1, 2 and Levels 1, 2, 3 supported
- Easy to use interface
- Comprehensive validation rules
- Seamless GIS integration
- Automated extract to NSG and NLPG hubs

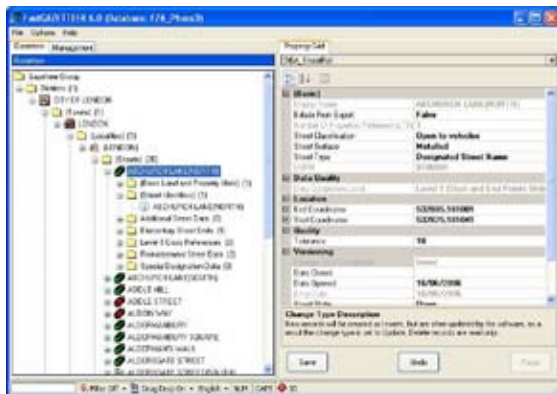


FastGAZETTEER™

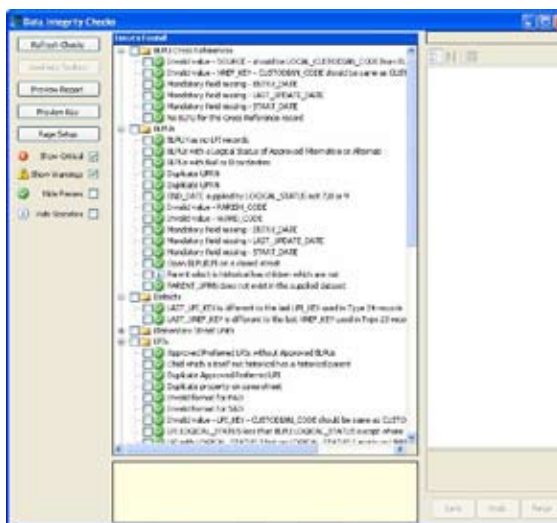
Key Features



Editing a BLPU



Editing a street



Data integrity checks

Parts and Levels

- Support for Part 0 (Metadata), Part 1 (Streets) and Part 2 (Land and Property) gazetteers
- Support for Part 1 additional street data (special reinstatement and special designation)
- Support for all levels of spatial data, from Level 1 (end points), Level 2 (elementary street units) to Level 3 (full geometry)
- Multiple language support (Welsh and English), with language 'hot switch'

Extracts

- Automated update of NLPG and NSG hubs
- Scheduled extracts (from master gazetteers)
- Scheduled loads (for slave gazetteers)
- Full and change only extract facilities
- DTF 6.3 and 7.3 export
- DTF 6.1 export (NSG data)
- Additional Street data, Street Reinstatement data, Street Special Designation Data

User Interface

- Hierarchical user interface for ease of data maintenance
- Wizard based application for common tasks – reducing the dependency on operator knowledge of the standard

Data Loading

- DTF 7.3 import
- DTF 6.1 import (NSG)
- Additional Street data, Street Reinstatement data, Street Special Designation Data

Data Integrity

- Rigorous rule based quality checking and auditing tools
- Validation rules – logical status, BLPU states etc
- Auditing of user operations

Database Features

- Industry standard database (SQL Server) for ease of corporate integration

GIS Features

- Seamless integration with GIS for querying and plotting street geometries
- GIS data format independent
- Optimised for use with Ordnance Survey MasterMap data



Enabled by

