

FastCHARGES™

Comprehensive Land Charges

FastCHARGES is a comprehensive Land Charges Management System designed for the efficient processing and handling of Land Charge searches. With powerful built in mapping, spatial querying, e-Government integration and web enablement, FastCHARGES is the ideal solution for Land Charges departments wanting a powerful, flexible, integrated system designed for the business needs of today and tomorrow.

What is FastCHARGES™?

FastCHARGES is a comprehensive Land Charges Management System, designed for the efficient processing of land charge searches. Based on up to date client server technology, it is a powerful, flexible, integrated system which is delivering best value to land charges departments across the UK.



What makes FastCHARGES™ different?

Full integration with BS7666 Land & Property Gazetteer databases to ensure a corporate approach to property information management. Innovative use of Intranet/Internet technologies to support distributed answering of CON29 questions by both internal departments and external agencies. Utilising the technologies of Cartology GIS, FastCHARGES provides both a graphical and textual based system, enabling Land Charges departments to implement new systems without the overhead of an initial costly data capture exercise.

Key Benefits

- Full Integrated GIS and mapping, most GIS formats supported
- Production of professional LLC1 and CON29 reports
- Web enabled Departmental Answers
- NLIS Level 3 compliance allowing receipt and return of on line searches
- Web enabled CON29 & LLC1 allowing swift response from all departments
- Links to BS7666
- Configurable questions and default answers
- Integration with departmental answers and land charges register
- User-configurable fee calculation and validation
- Performance indicators and financial reporting
- Improved OS MasterMap support and gazetteer integration



FastCHARGES™

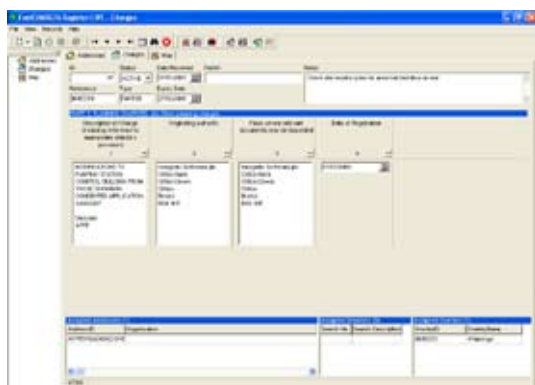
Key Features



Searches

Searches

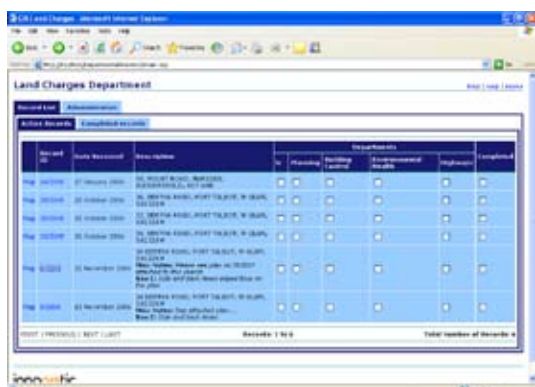
- Entry and validation of new search requests
- CON29 Question allocation
- Fee recording/calculation and recording of payments received
- Address linking from address source (including corporate gazetteers)
- Performance monitoring reports



Register

Register

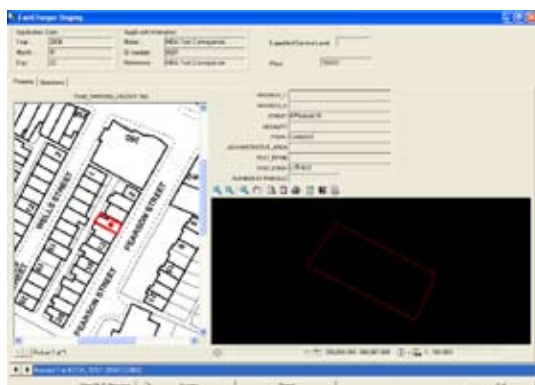
- Electronic register fully integrated with FastCHARGES Searches
- Relational-based register ensuring charge information is not duplicated unnecessarily
- Support for both textually and spatially linked charges
- Ability to support paper, textual and spatially held data
- GIS polygon selection of properties when adding charges to multiple addresses
- Combined spatial and textual land charges search
- On screen validation of spatial charges
- Automatic population of search record with details of appropriate charges
- Ideal platform for electronic searching via NLIS (National Land Information System)



Departmental Answers

Departmental Answers

- Intranet-based solution for distributed answering of CON29 Part I, II and III
- Tracking of search progress and departmental response times
- Full electronic data integration with FastCHARGES Searches improving efficiency and accuracy
- User-configurable departmental allocation of questions
- Can be integrated with Cartology.NET, Innogistic's web-based GIS
- Supports external agencies via dial-up access



NLIS

NLIS

- Receive NLIS level 3 requests electronically direct into the back office system
- Manage NLIS attachments
- Record NLIS fees automatically
- Send replies automatically to the NLIS hub

