

OS MasterMap® Management - FasterMap

Migrating to OS MasterMap®?

You need FasterMap – the new interoperable solution from Innogistic Software.

FasterMap delivers OS MasterMap data to all mainstream GIS packages*, without the need for expensive hardware, spatial databases, or specialist skills.

What is FasterMap?

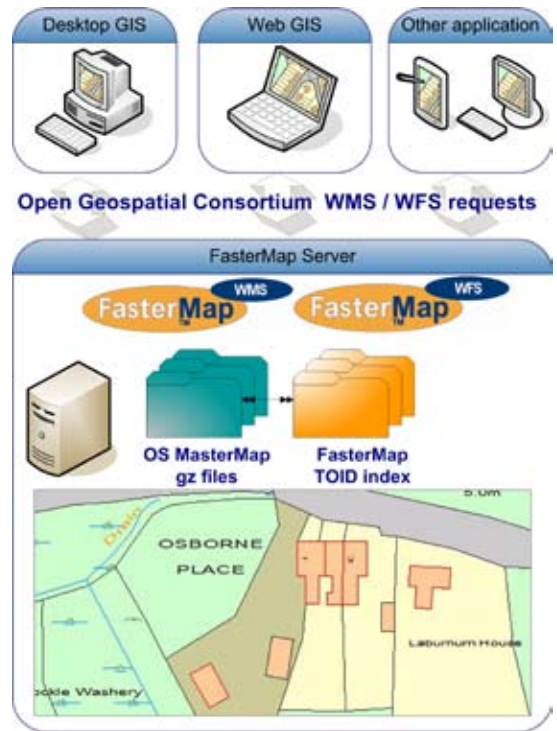
FasterMap is an innovative solution for managing OS MasterMap® data for subsequent use with any mainstream GIS solution – desktop or web*. Fully scalable to national coverage in only 62 gigabytes (Topographic layer), FasterMap’s innovative approach of using OS MasterMap® data directly in the compressed GML format supplied by the Ordnance Survey, ensures that migration costs are kept to a minimum.

What makes FasterMap different?

Most OS MasterMap® solutions either require data translation, with an associated risk of data loss, or loading into a spatial database infrastructure, with its associated costs. FasterMap is a fully scalable solution, which leaves OS MasterMap® data in its compressed GML format (GZ), and delivers it to your GIS systems using commonly adopted Open Geospatial Consortium standards.

A unique FasterMap TOID index ensures appropriate performance and scalability to national coverage. The adoption of Web Map Service and Web Feature Service delivery protocols provides fully rendered maps, plus access to geometry and attribute information, from both desktop and web solutions*.

* Your GIS solution must comply with Open Geospatial Consortium WMS / WFS client protocols



FasterMap Architecture

Key Benefits

- No database required – cost effective
- Scalable to national coverage in 62 gigabytes (topographic layer)
- Simple change only update management
- Support for historic views
- Full OS style guide supported
- Up and running in minutes



OS MasterMap[®] Management - FasterMap

Key Features

No need for a database

- No database license costs
- No loader software license costs
- No additional staff or training costs (e.g. DBA)
- Simple administration & management
- Excellent performance
- Simple migration from OS LandLine

No data translation

- No risk of data loss
- No change to attribution / schema, as access is directly to the GML

Compact data volumes

- National coverage in 62 gigabytes (Topographic layer)
- Low hardware costs
- Easy replication for failover, testing, training etc
- Portable (e.g. on a laptop), for mobile solutions

Change only update management

- Easy change only update management
- No need for multiple data copies
- COU's can be applied while other applications continue to access the data. No downtime.

Interoperable

- Use FasterMap from any mainstream GIS application
- Ideal for sites with more than one GIS
- Offers an alternative to the database-centric option
- Suitable for intranet and internet architectures

Historic views (e.g. show map on 1/1/2006)

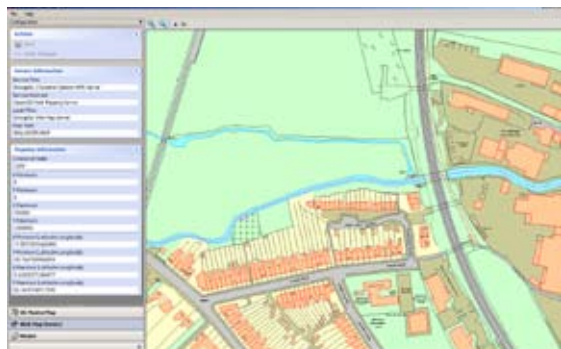
- Ideal for applications where maps are date specific (e.g. planning application records)
- No archiving. A continuous live database!

Web service architecture

- Ideal for both Desktop and Web applications
- Single OS MasterMap[®] repository, accessible over internet / intranet / WAN / LAN

Full Ordnance Survey style guide supported

- View OS MasterMap[®] data as the Ordnance Survey intended
- Support for all simple and complex symbologies



FasterMap Manager



Web feature service query of FasterMap

