

# Web GIS - Cartology.NET™

Joining up geography with web based GIS

Interactive on-line mapping is an ideal method for communicating complex information to wide audiences in a compelling and easy to understand way.

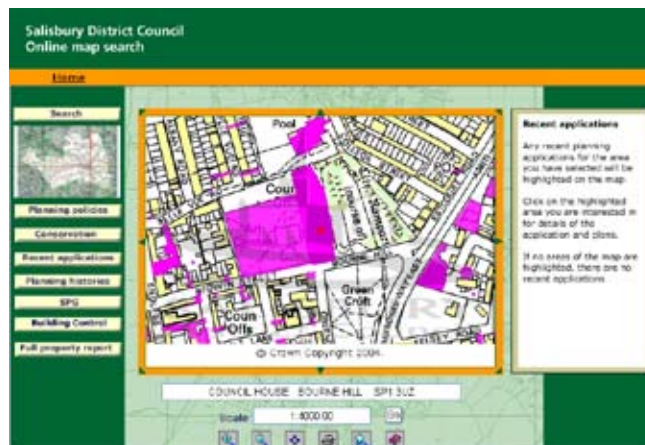
Delivering these services – even when joining up information from multiple agencies - is now even easier with web based GIS technology from Innogistic.

## What is Cartology.NET™?

Cartology.NET is a web based Geographic Information System (GIS) developed by Innogistic.

Combining rich functionality with simplicity of administration and management, Cartology.NET is the ideal choice for rapidly delivering map-based on-line services with the minimum of fuss.

Integrating information from multiple sources is simple with Cartology.NET – making it the ideal solution for multi-agency projects in the public and private sectors.



Planning applications at Salisbury District Council

## What makes Cartology.NET™ different?

Unlike most web GIS systems which require extensive programming and IT skills, Cartology.NET is an out of the box solution with a difference. Tasks like setting up new map layers, styling them, defining visualisation scales and view / print / query rights, are all done using a set of administration web pages, which give complete control over your on-line service, without needing to write a single line of code.

With extensive support for a wide range of data formats, getting up and running quickly and establishing an immediate return on your investment, is readily achievable – whatever your source GIS formats.

## Key Benefits

- Deliver easy to use on-line services, without programming
- Manage all administration tasks, simply and easily
- Integrate data from multiple GI sources, and multiple agencies
- Maintain complete control over data rights and access
- Realise an instant return on your investment by getting up and running quickly
- Communicate complex information to a wide audience.



# Cartology.NET™

## Key Features



Local development framework website at Eden District council

### Ease of Administration

- Service management using administration pages
- Add / remove / map and data layers
- Layer based control of user access rights (view / print / query)
- Layer based administration rights (upload, delete)
- Layer based control of watermarking

### Standard End User Pages

- Navigation (pan / zoom etc.)
- Layer control (on / off)
- Gazetteer searching
- Reporting
- Spatial & attribute queries
- Feature selection
- Split screen comparisons
- PDF print downloads

### Customisable End User Pages

- Toolkit for customising end user pages
- Access from standard programming languages
- Navigation control components
- Query control components
- Layer control components

### Data Access

- Native support for all common GIS file formats (shp, tab, mif / mid etc.)
- Native support for all common CAD formats (dxf, dwg\*, dgn etc.)
- Native support for all common databases (SQL server, Oracle etc.)
- Open GIS support (GML, WKB, WMS)
- All common raster formats

### OS MasterMap® Support

- Nationwide coverage in 62 GB (Topographic layer)
- Simple change only update management
- Support for historical views
- Full Ordnance Survey style guide support
- User defined representation options

### Architecture

- .NET architecture



Utility data on-line at Yorkshire Water



Public service information on-line at the London Borough of Sutton

